

SEALAVIE

LUXURY LIVING BY THE BAY



Real Estate Development

Why **ABU DHABI?**

Abu Dhabi, a world of endless possibilities, where you can enjoy year-round sports, entertainment, and cultural events in a safe and secure environment. Abu Dhabi is a hub for innovation and sustainability, with world-class infrastructure. With a well-regulated market and tax free benefits It is the perfect location for investment. In Abu Dhabi, the opportunities are boundless



Yas Island

A destination designed to suit every lifestyle, from the aspirational to the adventurous, and where everything you want is within reach.





Welcome To

Sea La Vie

Luxury Living by the Bay



gettyimages
Thomas Barwick

A unique waterfront lifestyle destination

Where today's innovations are creating homes and building happy communities that are environmentally friendly and sustainable, ensuring a better quality of life for all.



**A blend of stunning architecture,
modern design and unrivaled
views**





A community where waterfront living takes on a new dimension of elegance



Fulfilling your needs and nurturing mind, body and soul - your health and wellbeing are catered for at Sea La Vie.

ge
Cai

Designed for your comfort

Hi-tech fixtures and fittings are complemented by the ingress of natural light, allowing subtle hues and creative lighting to enhance the spacious accommodation, designed for a relaxing ambiance.



g
S

Inspired by the Sea

Our concept is to designed to embrace and reflect the sea colors in the interior spaces for a better dialogue between inside and outside.

CONNECT



WITH



MOTHER



NATURE



**Where luxury and
nature combine**



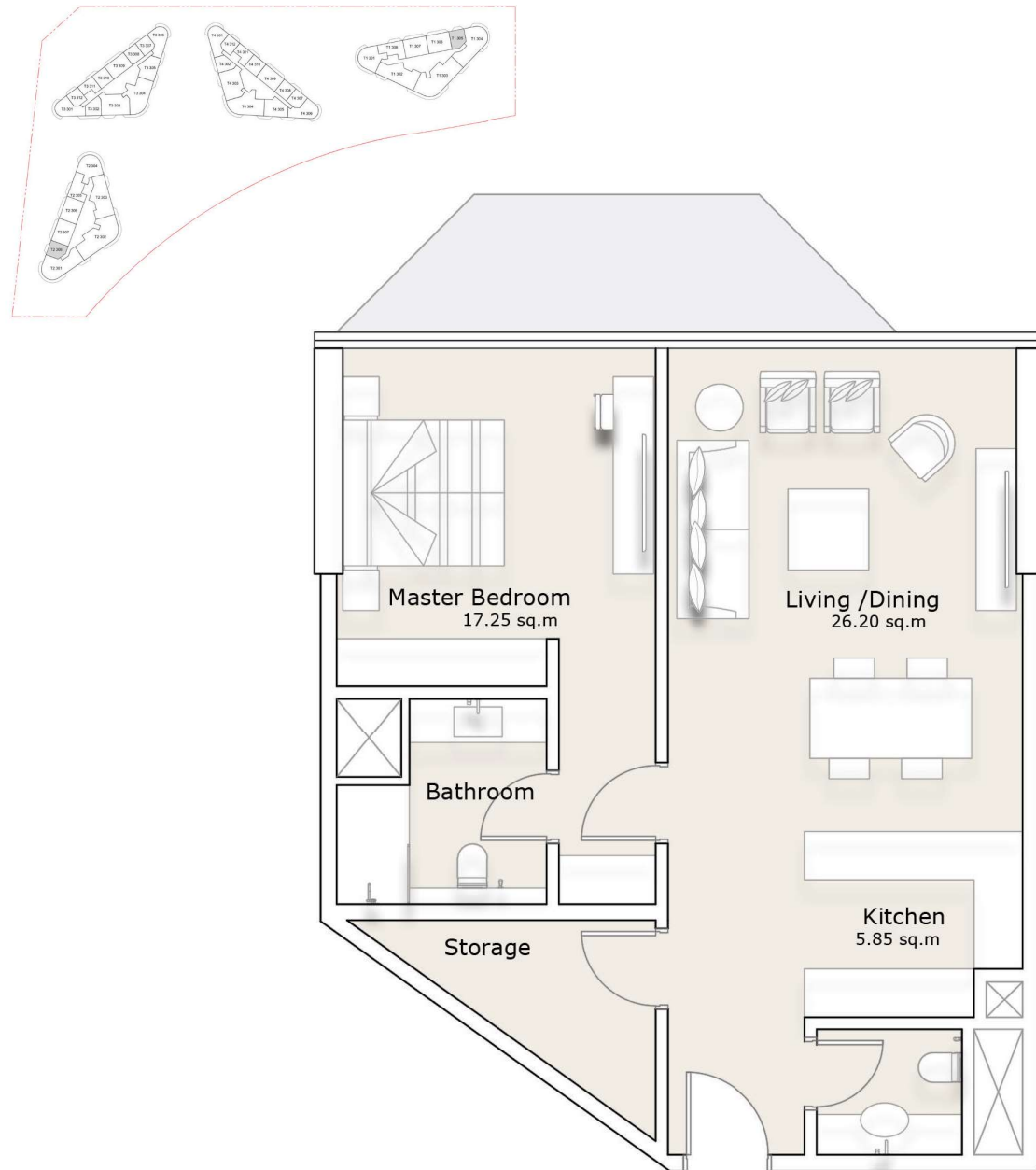






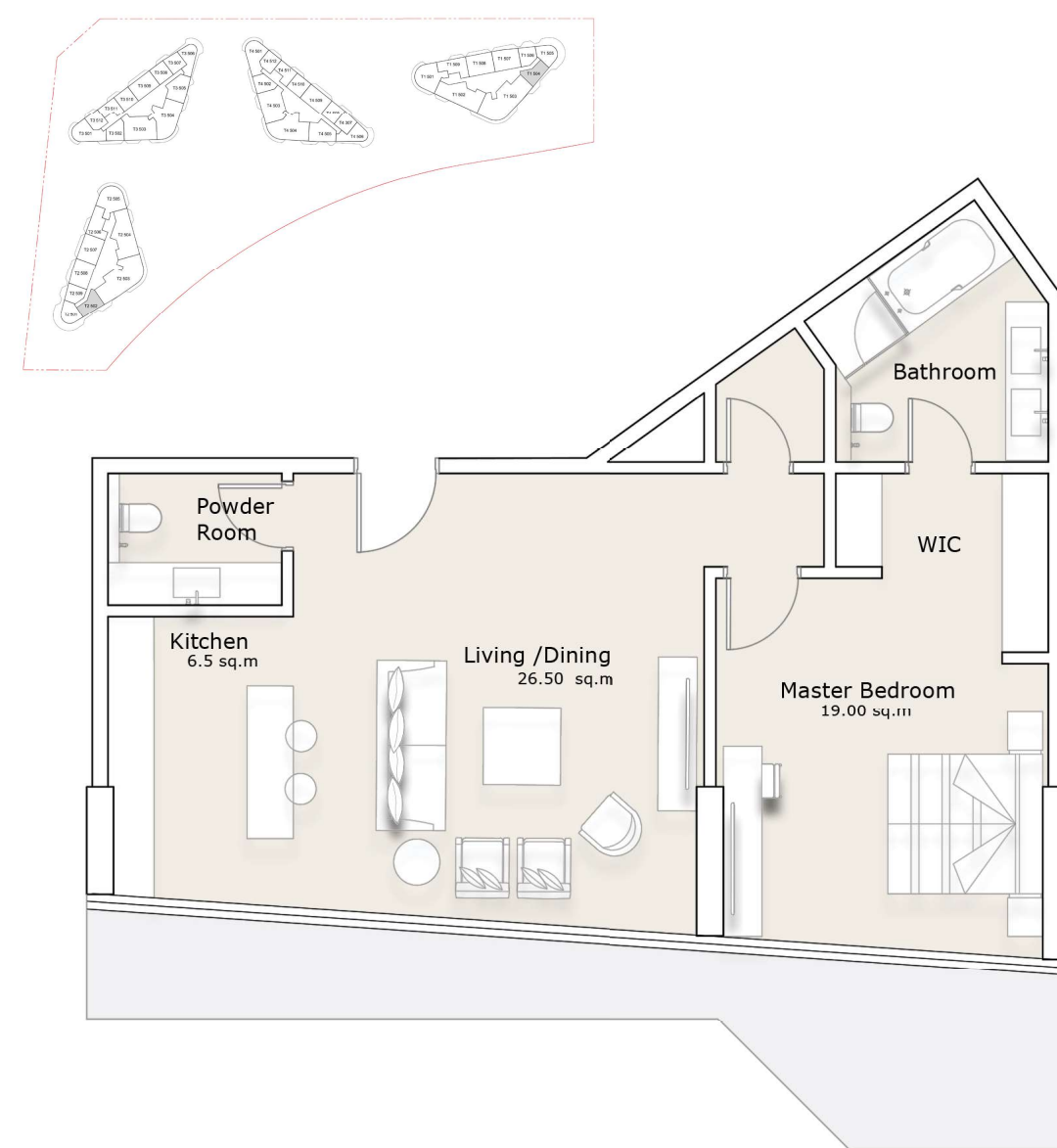
1-Bedroom Apartment

TOWER 1 & 2 - TYPE A



1-Bedroom Apartment

TOWER 1 & 2 - TYPE B

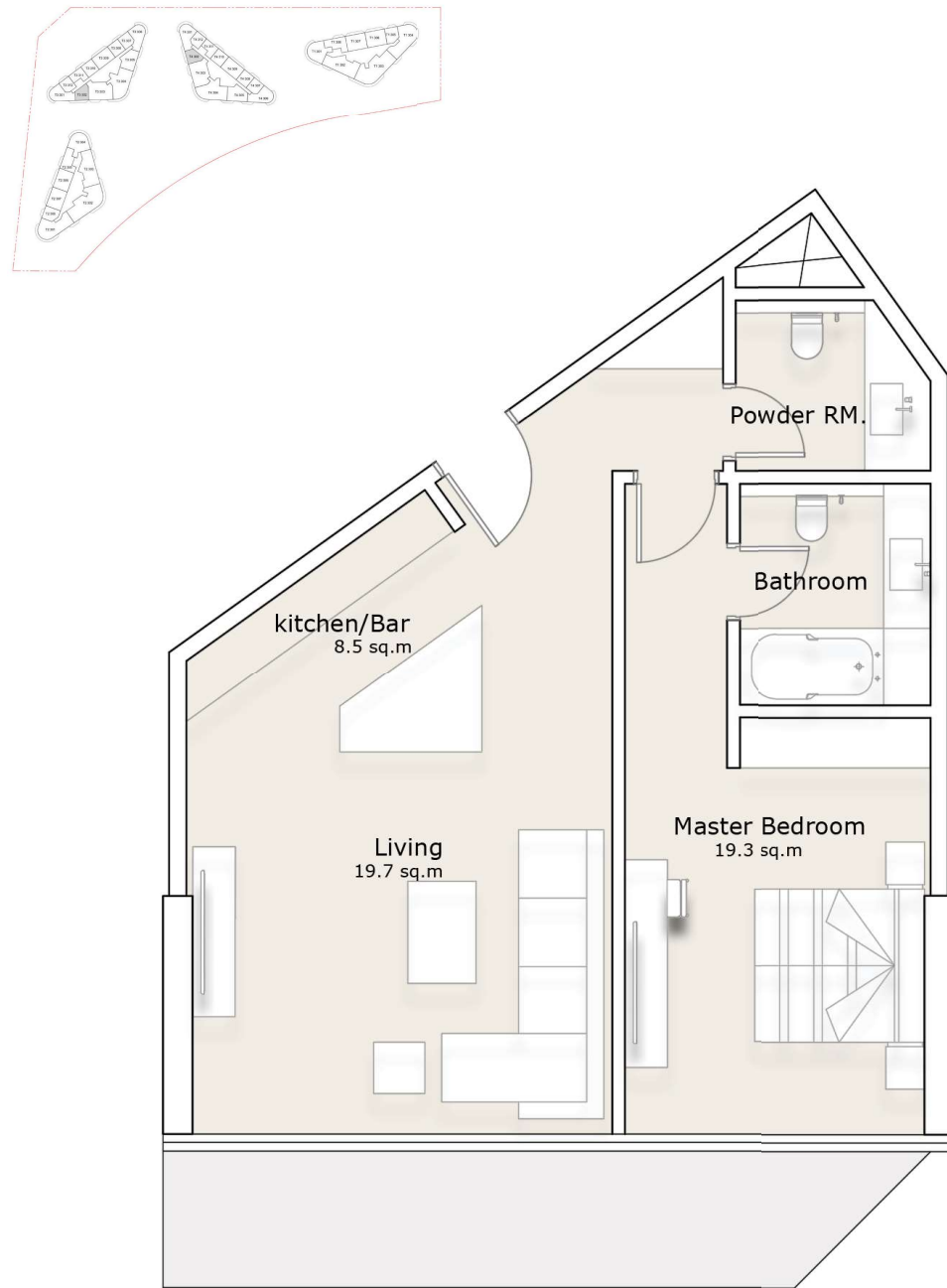




All materials, dimensions, and drawings are approximate only, including actual areas. / Information is subject to change at developer's discretion, without notice, and developer reserves the right to make revisions without liability. / All images used are for illustrative purposes only and do not represent the actual size, features, specifications, fittings, and furnishings.

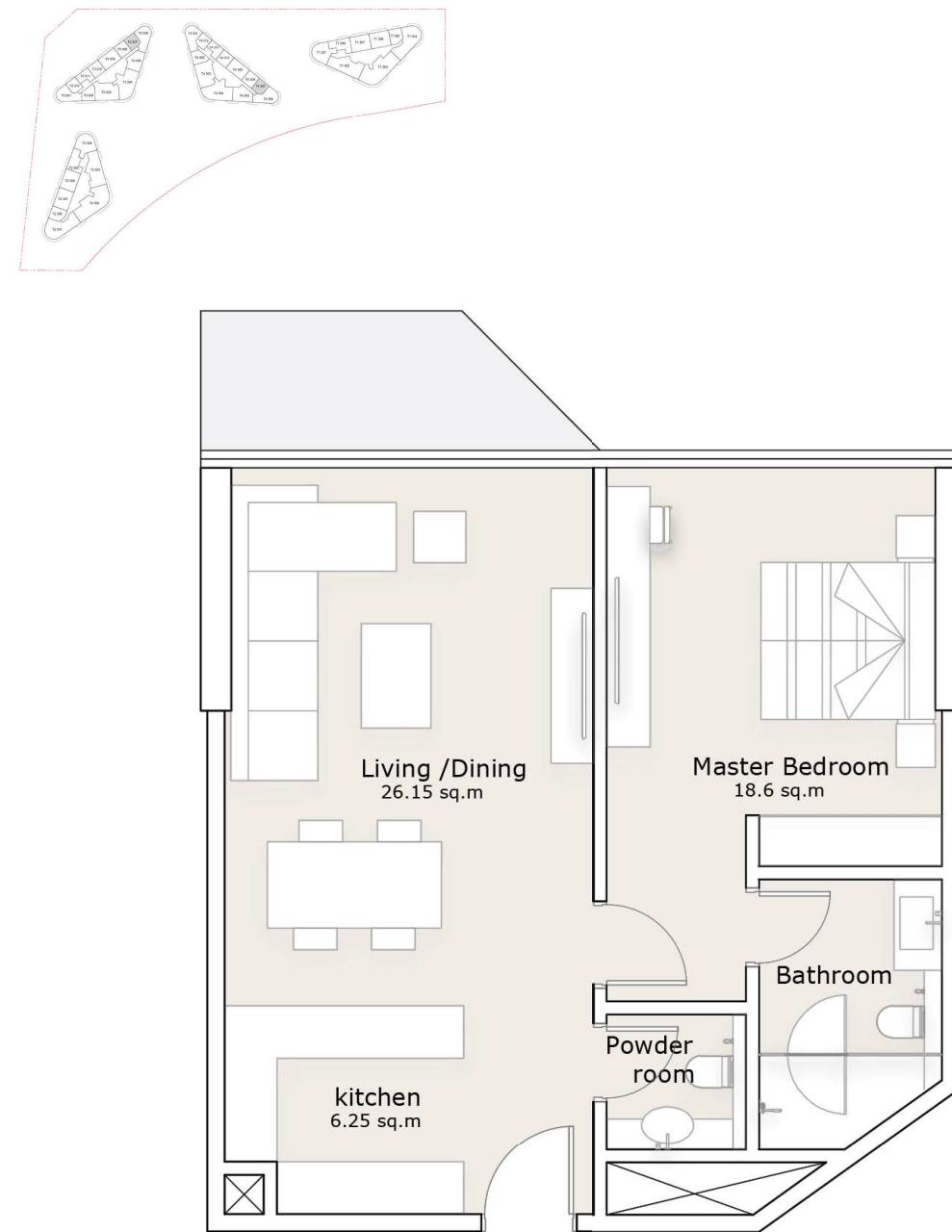
1-Bedroom Apartment

TOWER 3 & 4 - TYPE C

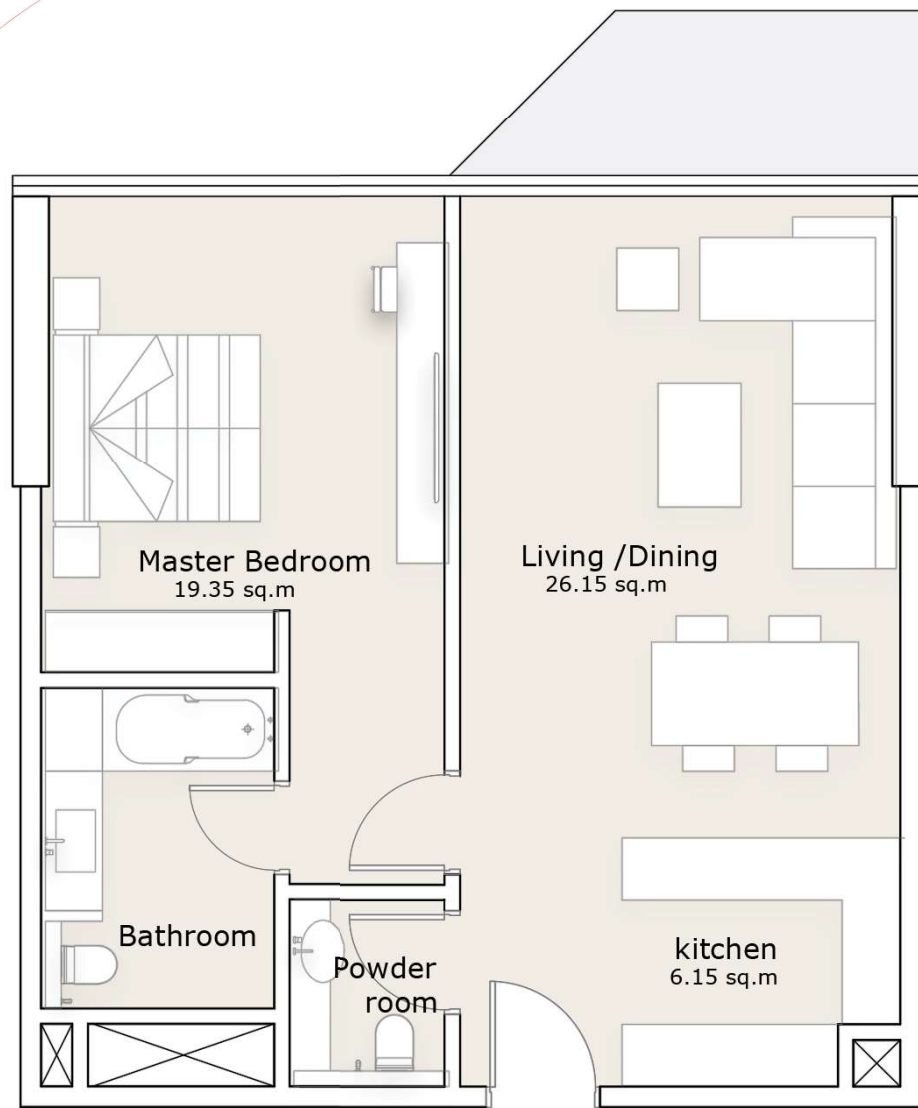
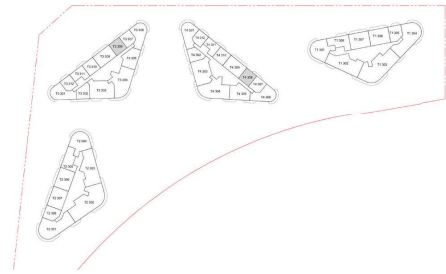


1-Bedroom Apartment

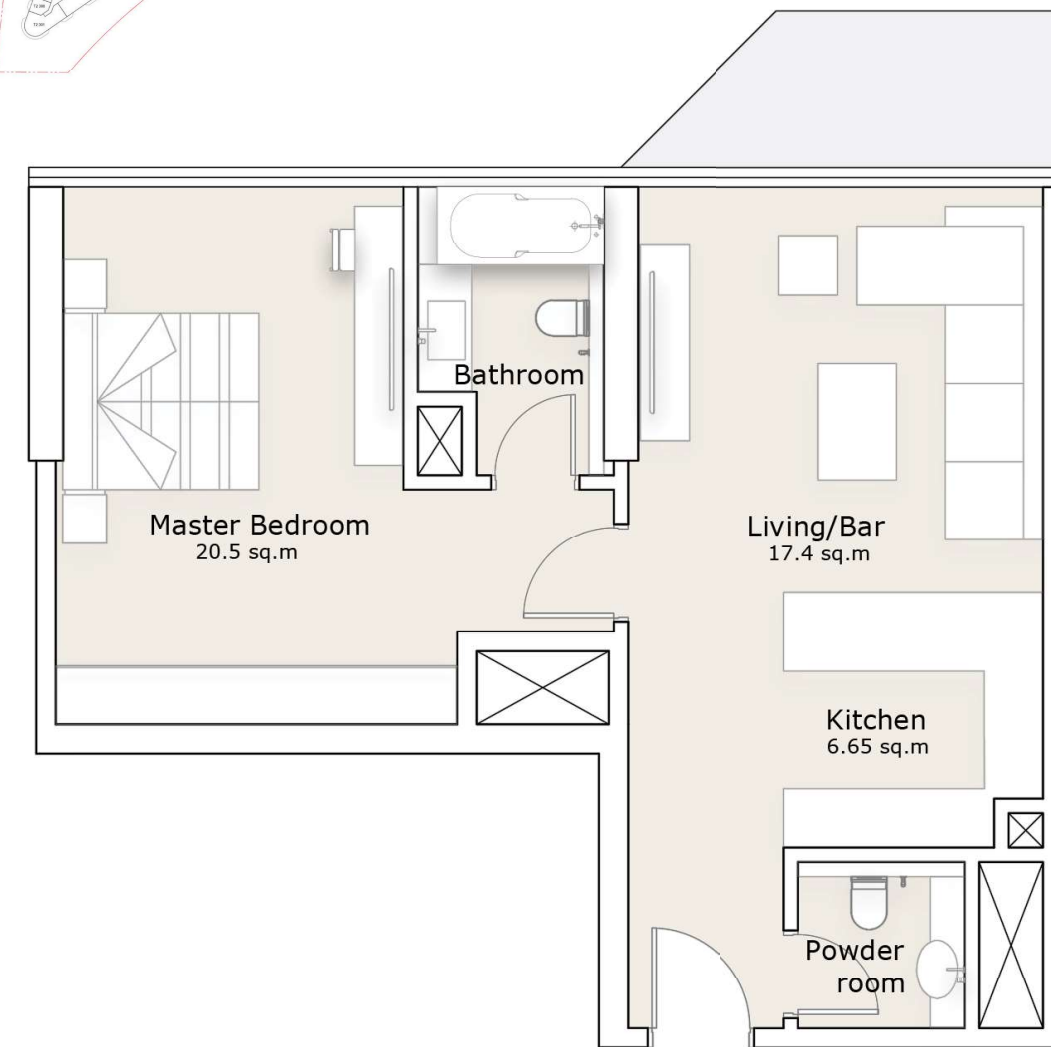
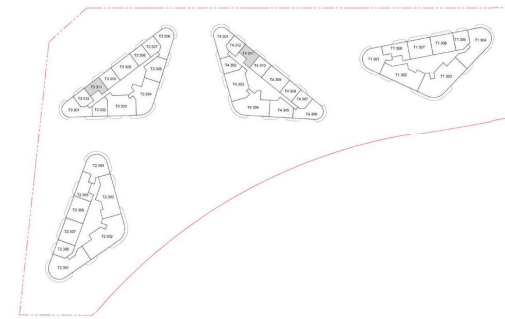
TOWER 3 & 4 - TYPE D



1-Bedroom Apartment TOWER 3 & 4 - TYPE E

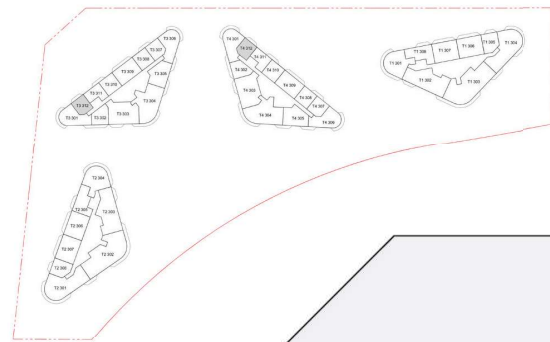


1-Bedroom Apartment TOWER 3 & 4 - TYPE F



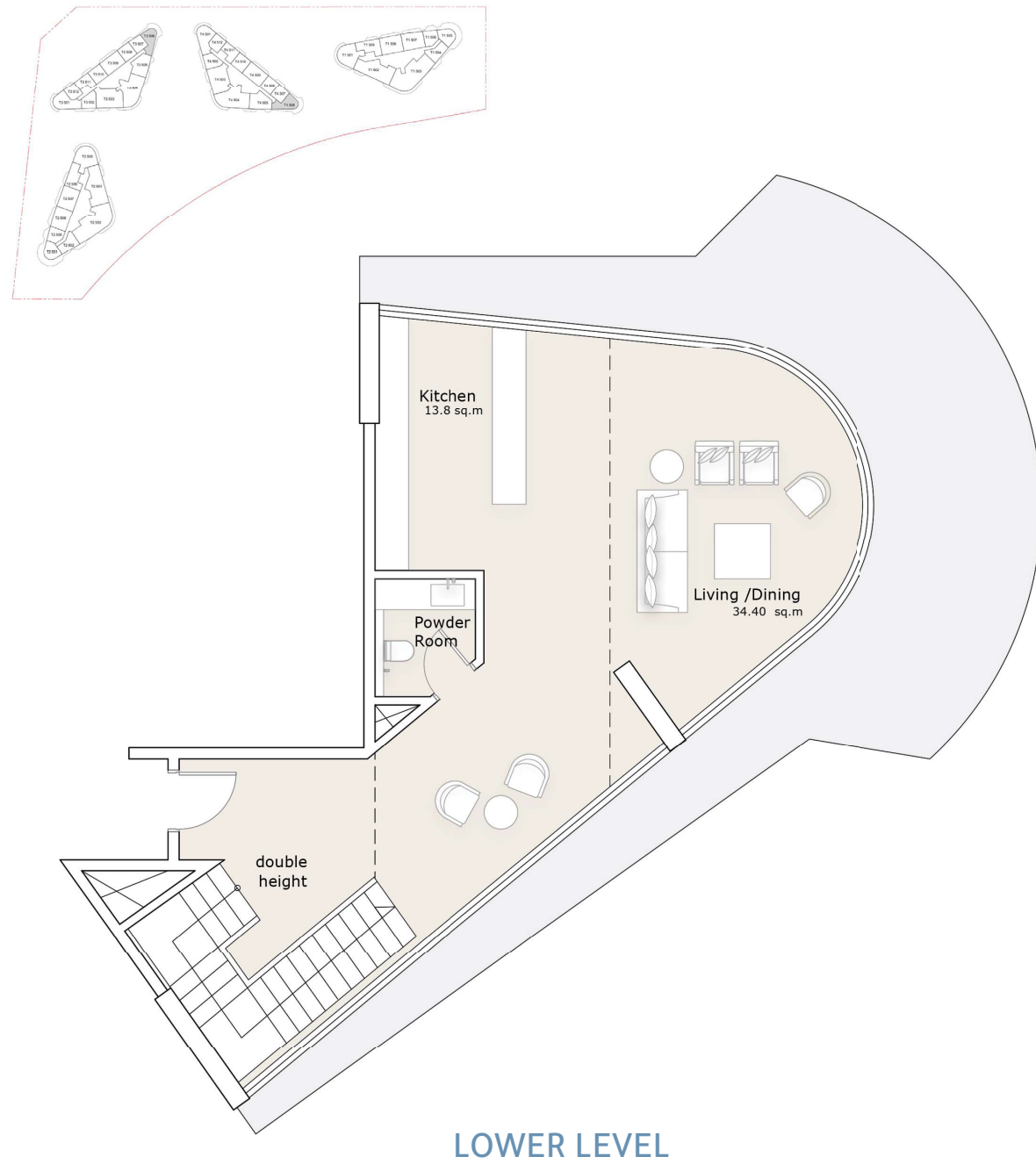
1-Bedroom Apartment

TOWER 3 & 4 - TYPE G



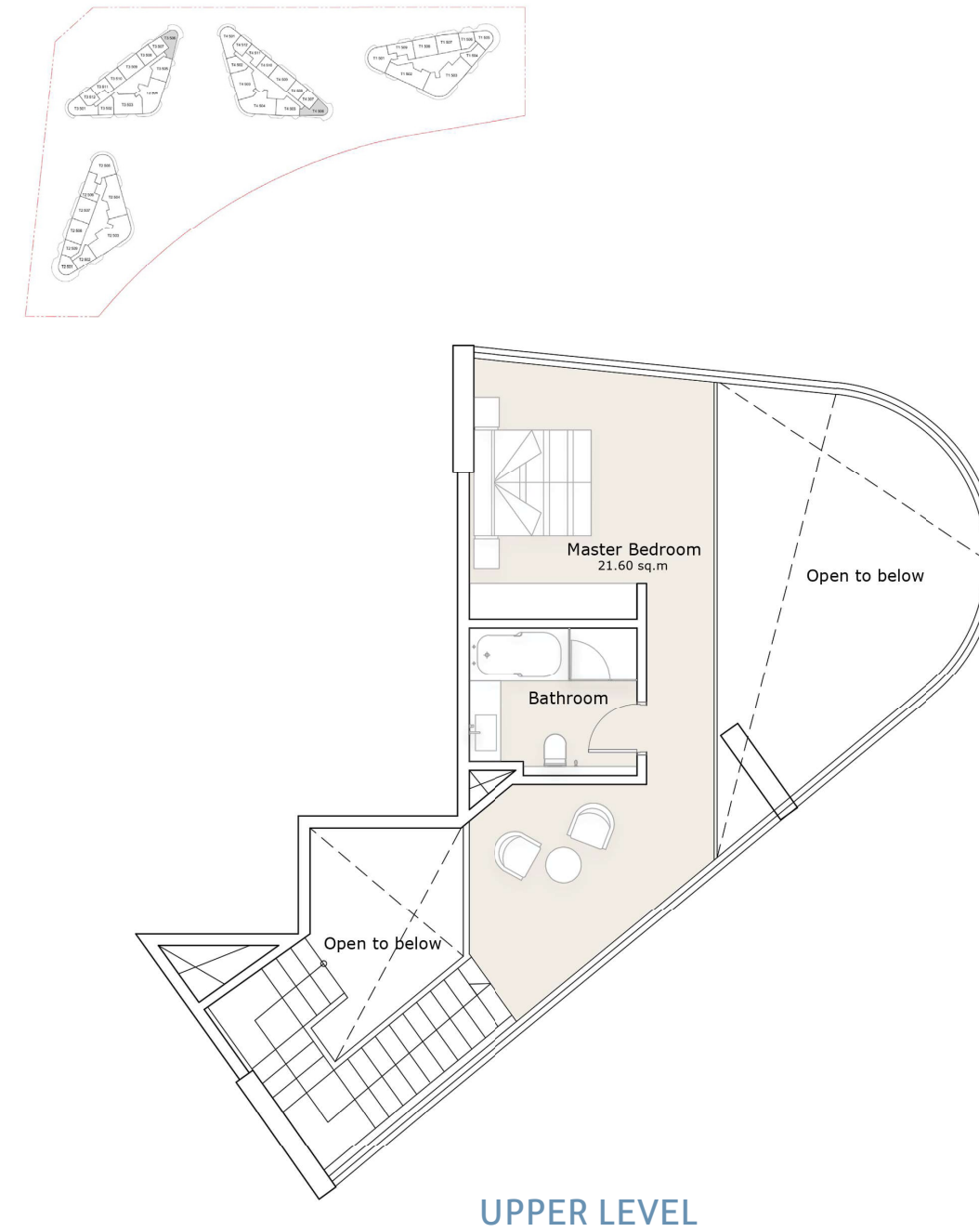
1-Bedroom Apartment

TOWER 3 & 4 - LOFT



1-Bedroom Apartment

TOWER 3 & 4 - LOFT

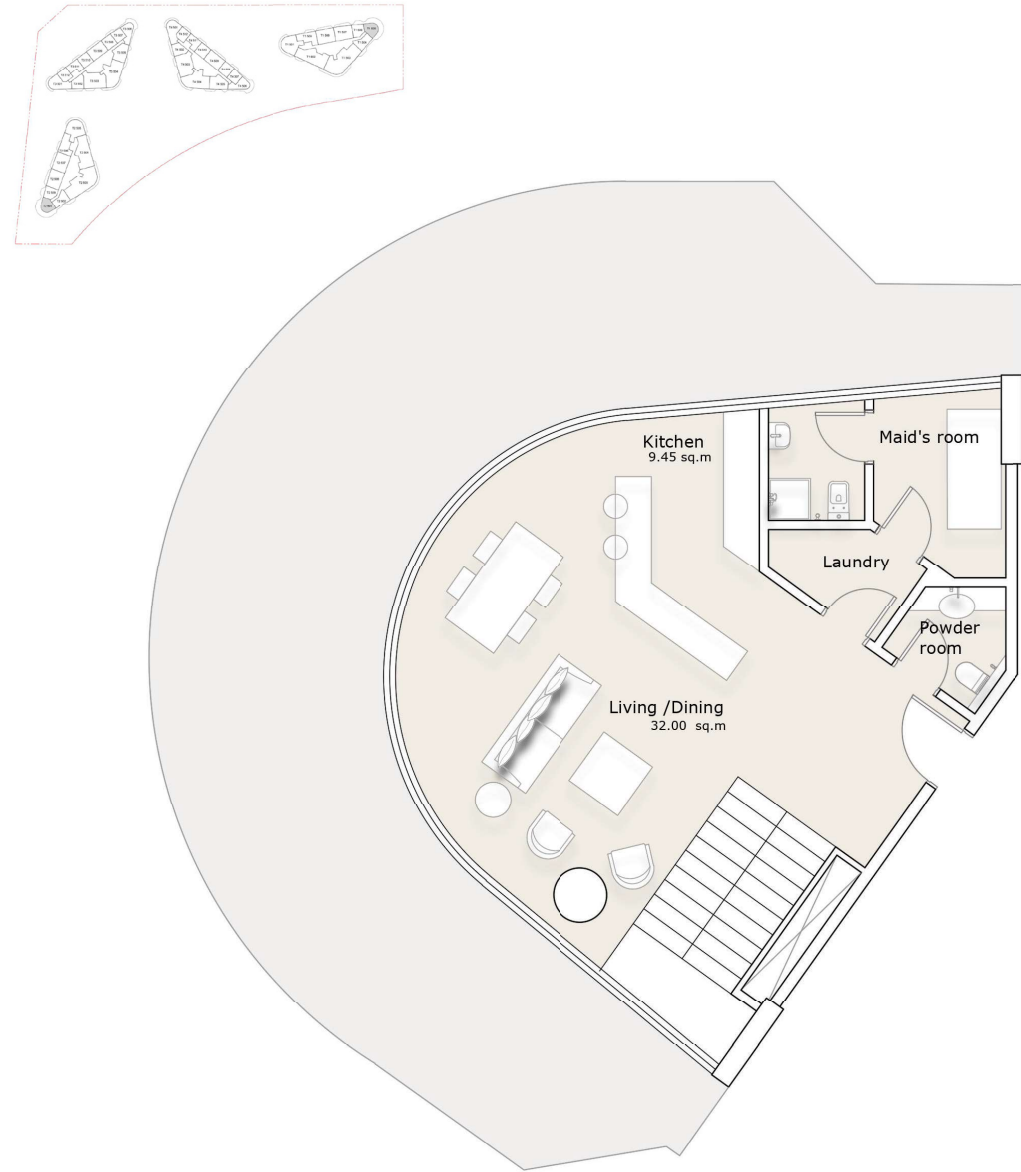




All materials, dimensions, and drawings are approximate only, including actual areas. / Information is subject to change at developer's discretion, without notice, and developer reserves the right to make revisions without liability. / All images used are for illustrative purposes only and do not represent the actual size, features, specifications, fittings, and furnishings.

2-Bedroom Apartment

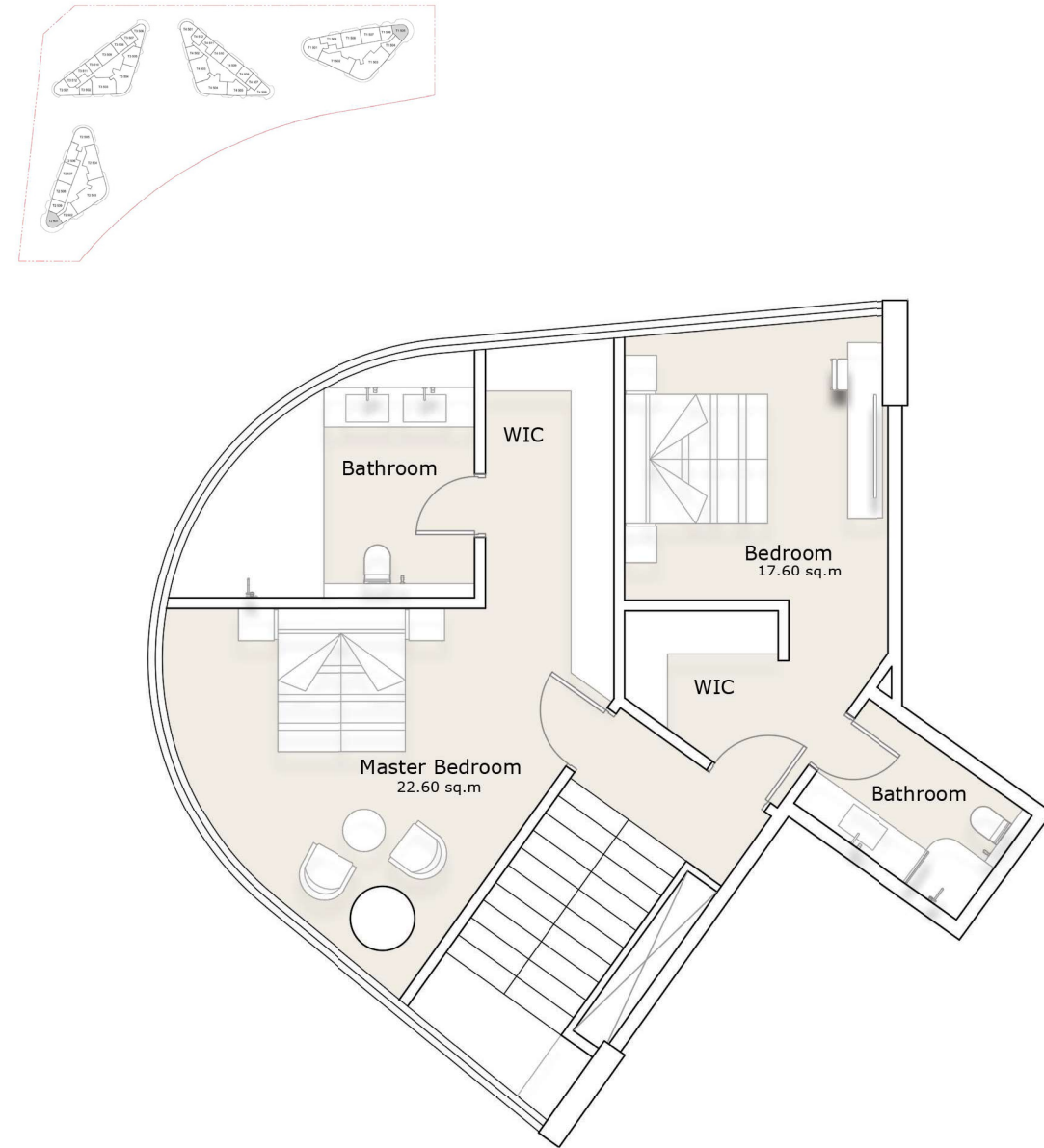
TOWER 1 & 2 - DUPLEX



LOWER LEVEL

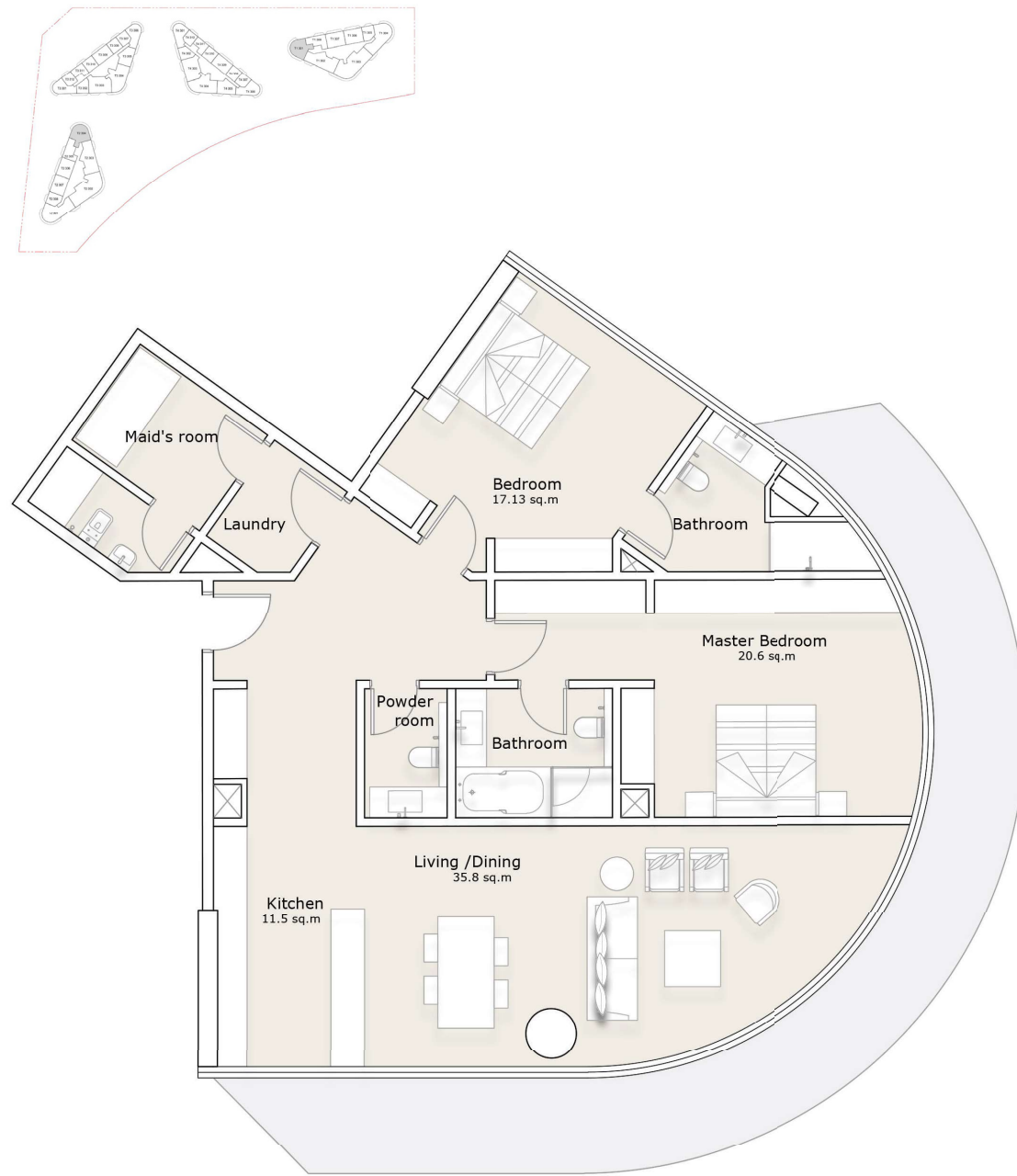
2-Bedroom Apartment

TOWER 1 & 2 - DUPLEX

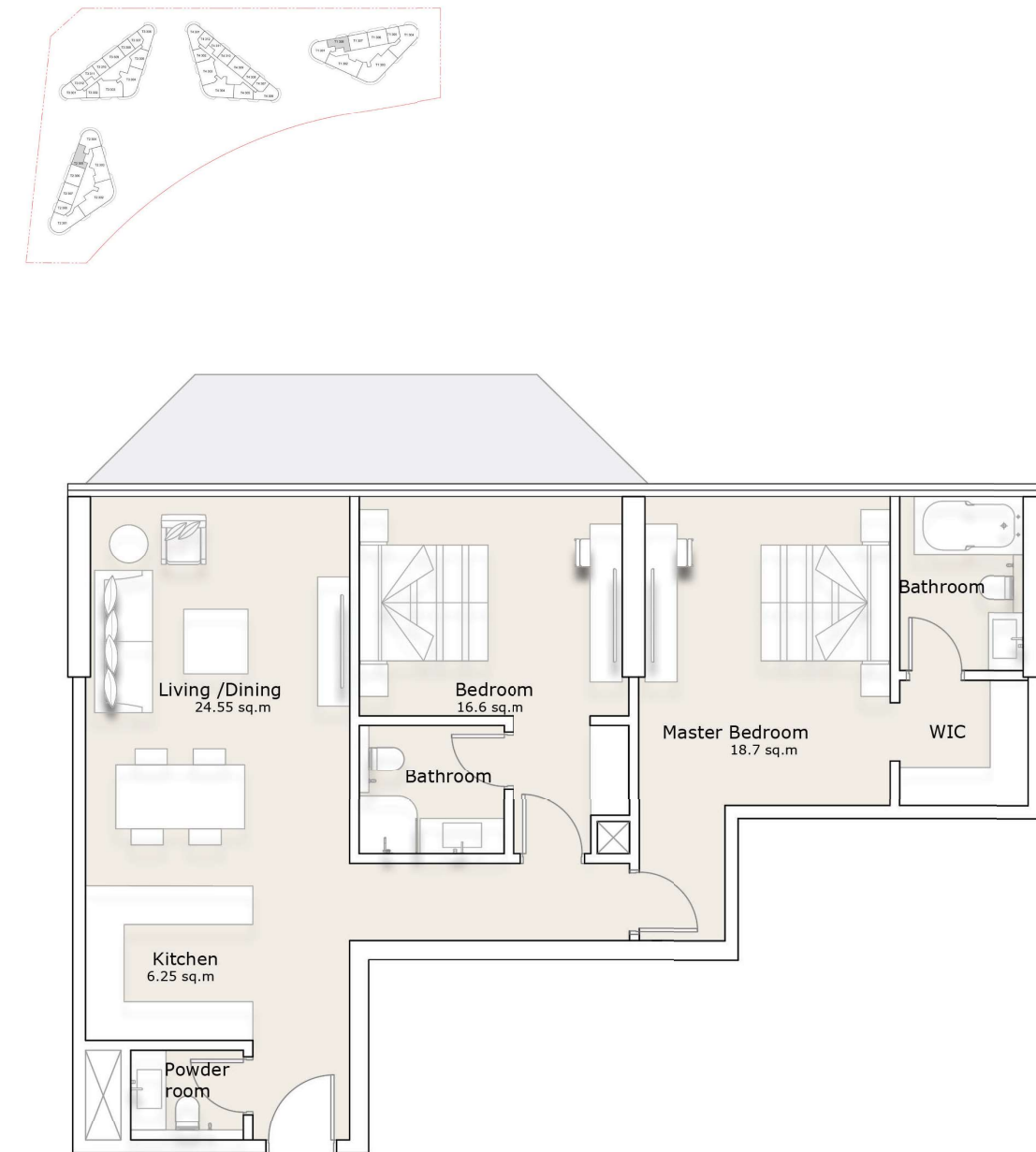


UPPER LEVEL

2-Bedroom Apartment TOWER 1 & 2 - TYPE A

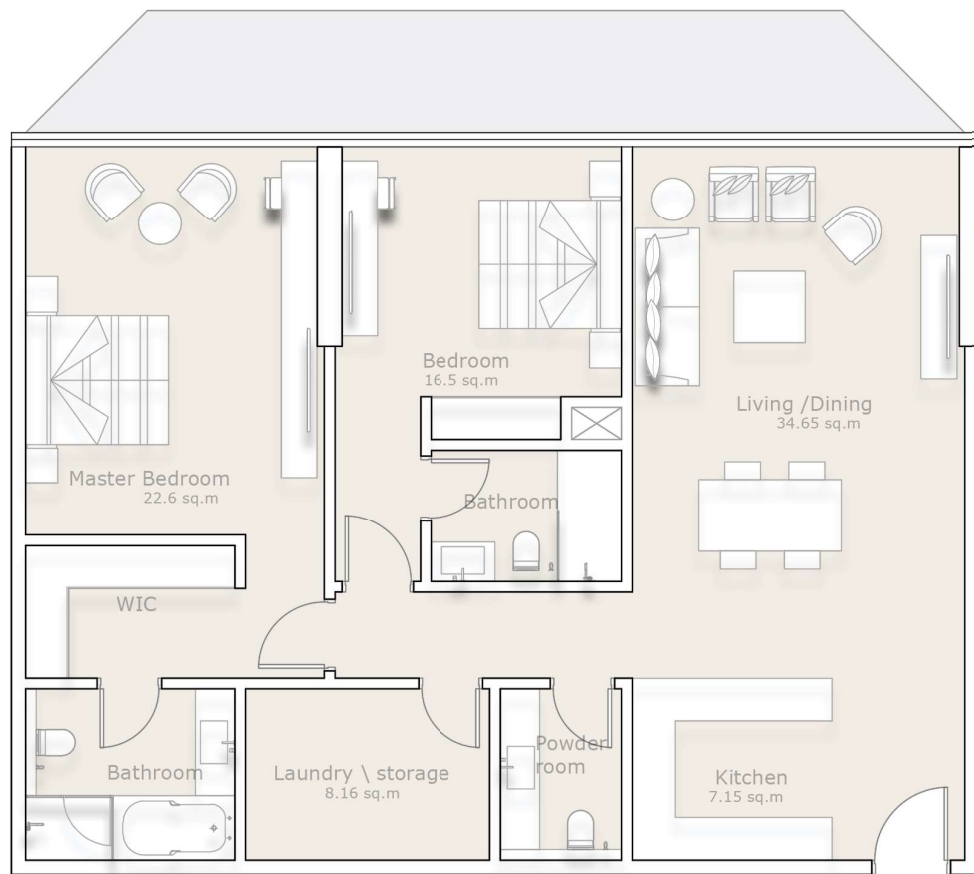
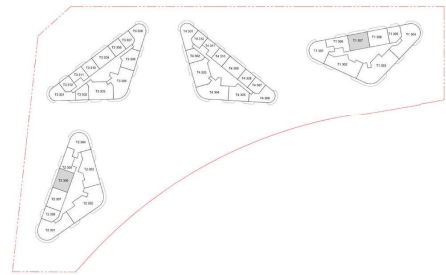


2-Bedroom Apartment TOWER 1 & 2 - TYPE B



2-Bedroom Apartment

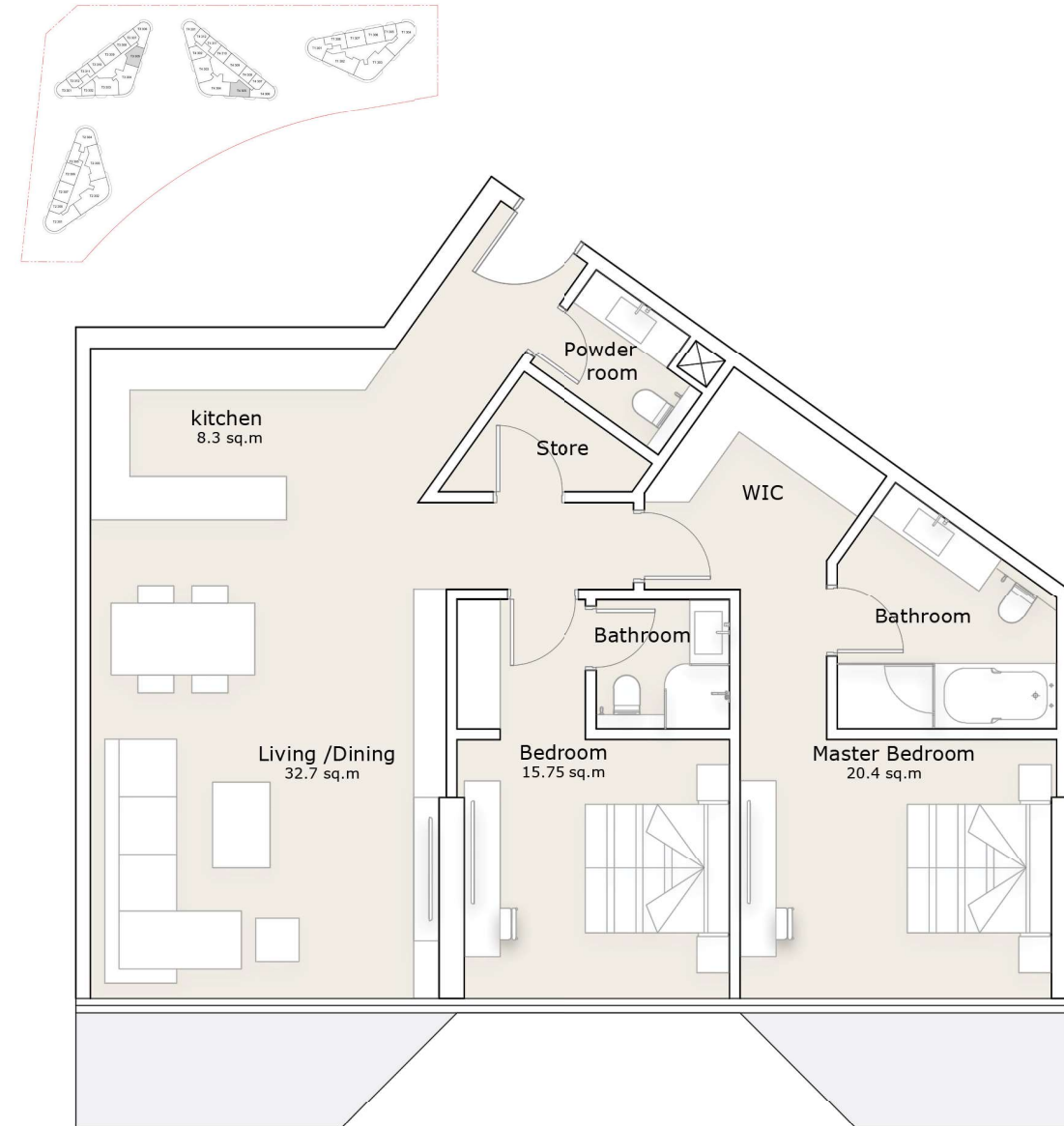
TOWER 1 & 2 - TYPE C



2-Bedroom Apartment TOWER 3 & 4 - TYPE D

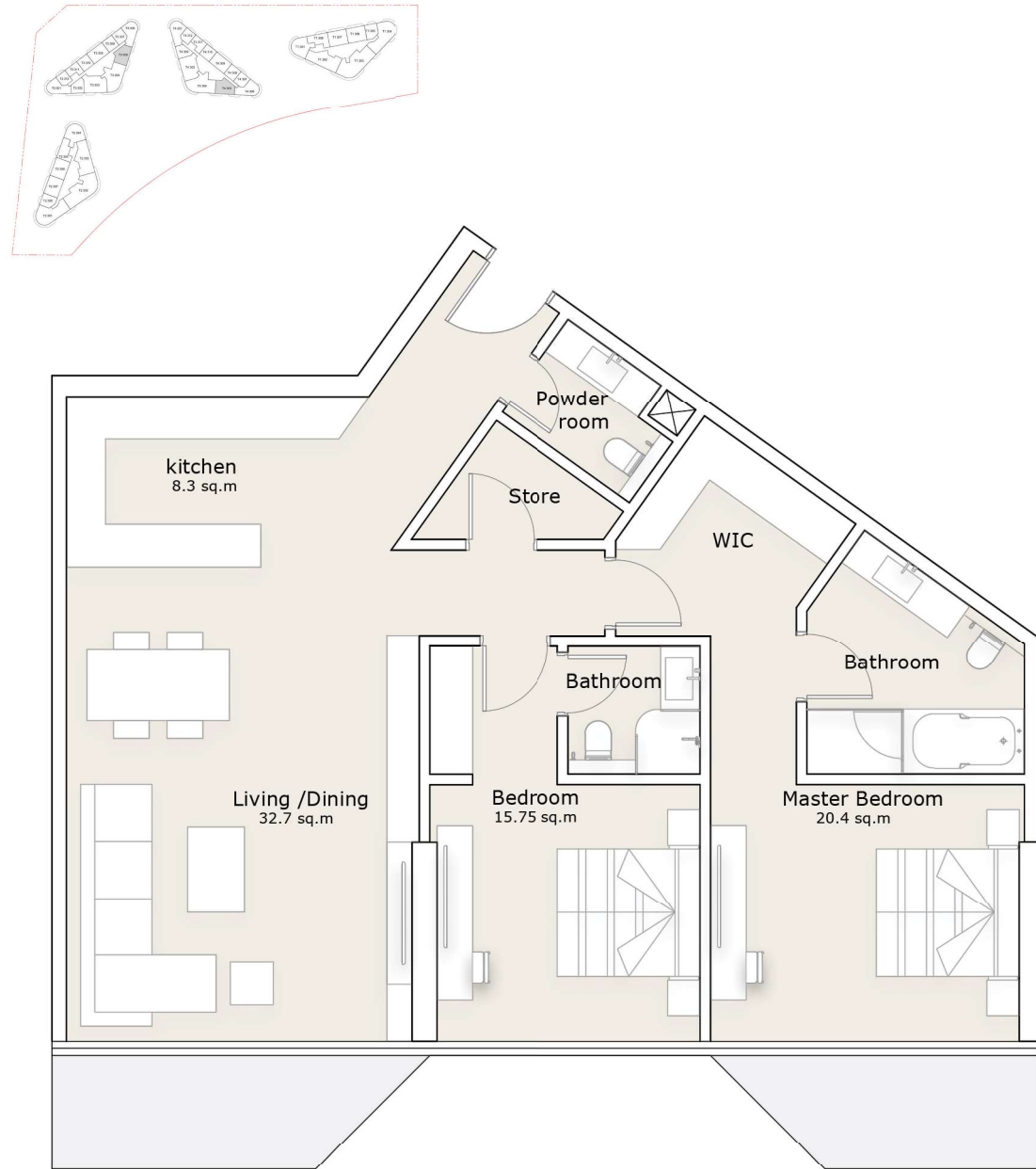


2-Bedroom Apartment TOWER 3 & 4 - TYPE E



2 Bedroom Apartment

TOWER 3 & 4 - TYPE E



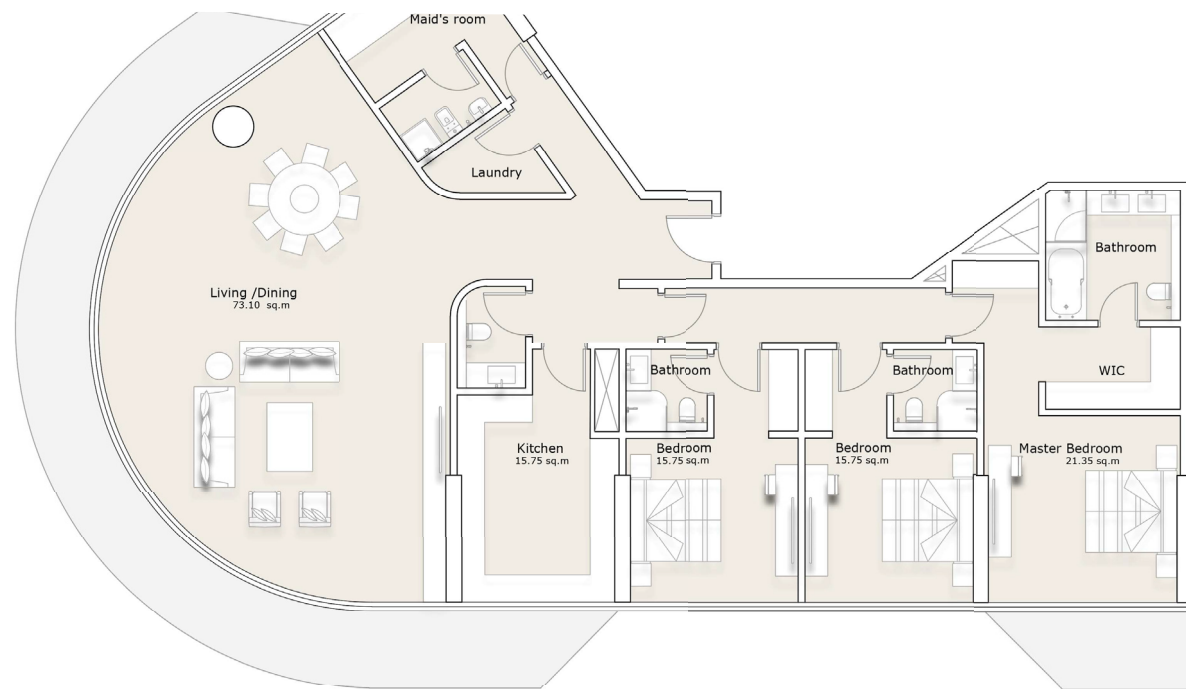
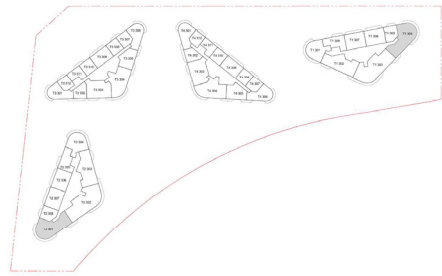
POWDER ROOM



All materials, dimensions, and drawings are approximate only, including actual areas. / Information is subject to change at developer's discretion, without notice, and developer reserves the right to make revisions without liability. / All images used are for illustrative purposes only and do not represent the actual size, features, specifications, fittings, and furnishings.

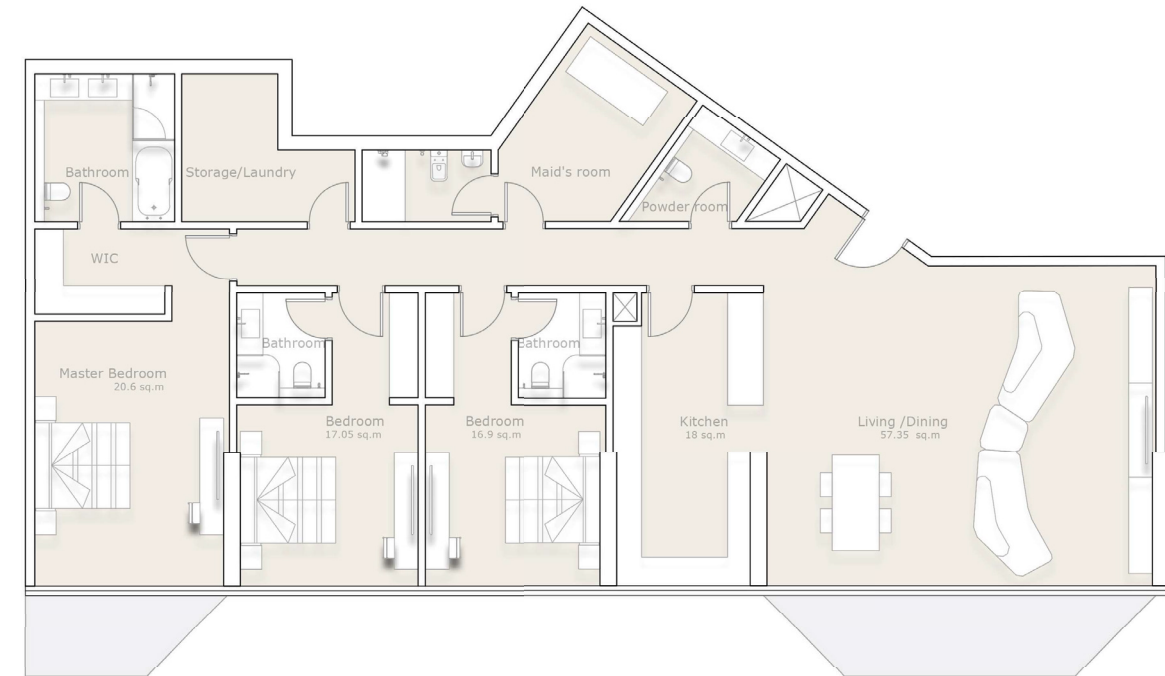
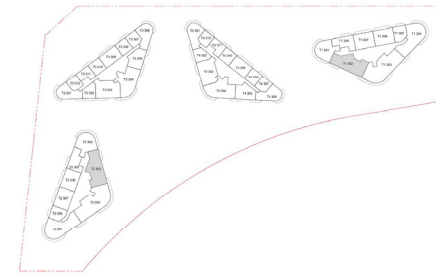
3 Bedroom Apartment

TOWER 1 & 2 - TYPE A



3 Bedroom Apartment

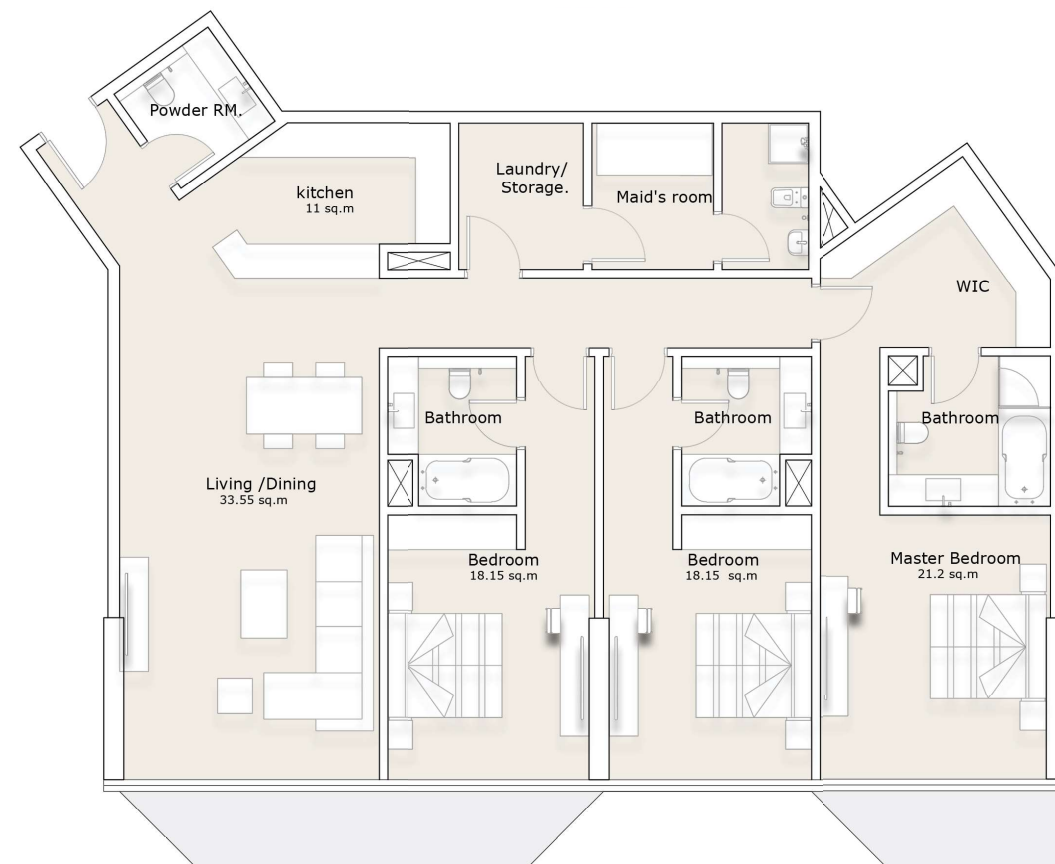
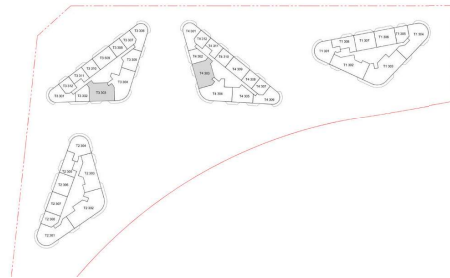
TOWER 1 & 2 - TYPE B



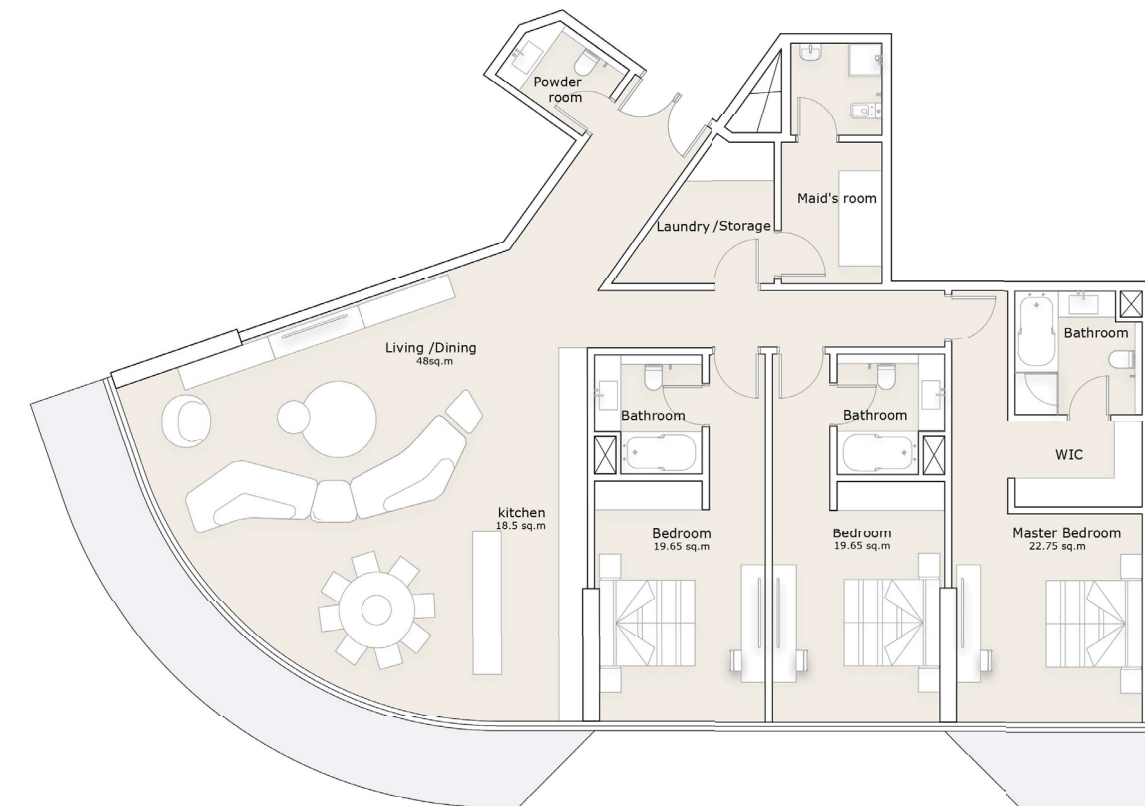
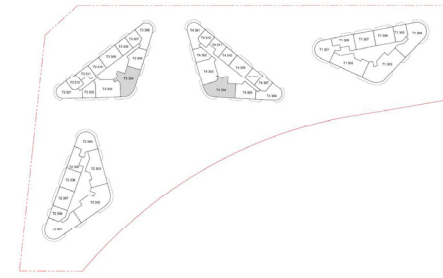


All materials, dimensions, and drawings are approximate only, including actual areas. / Information is subject to change at developer's discretion, without notice, and developer reserves the right to make revisions without liability. / All images used are for illustrative purposes only and do not represent the actual size, features, specifications, fittings, and furnishings.

3-Bedroom Apartment TOWER 3 & 4 - TYPE C



3-Bedroom Apartment TOWER 3 & 4 - TYPE D

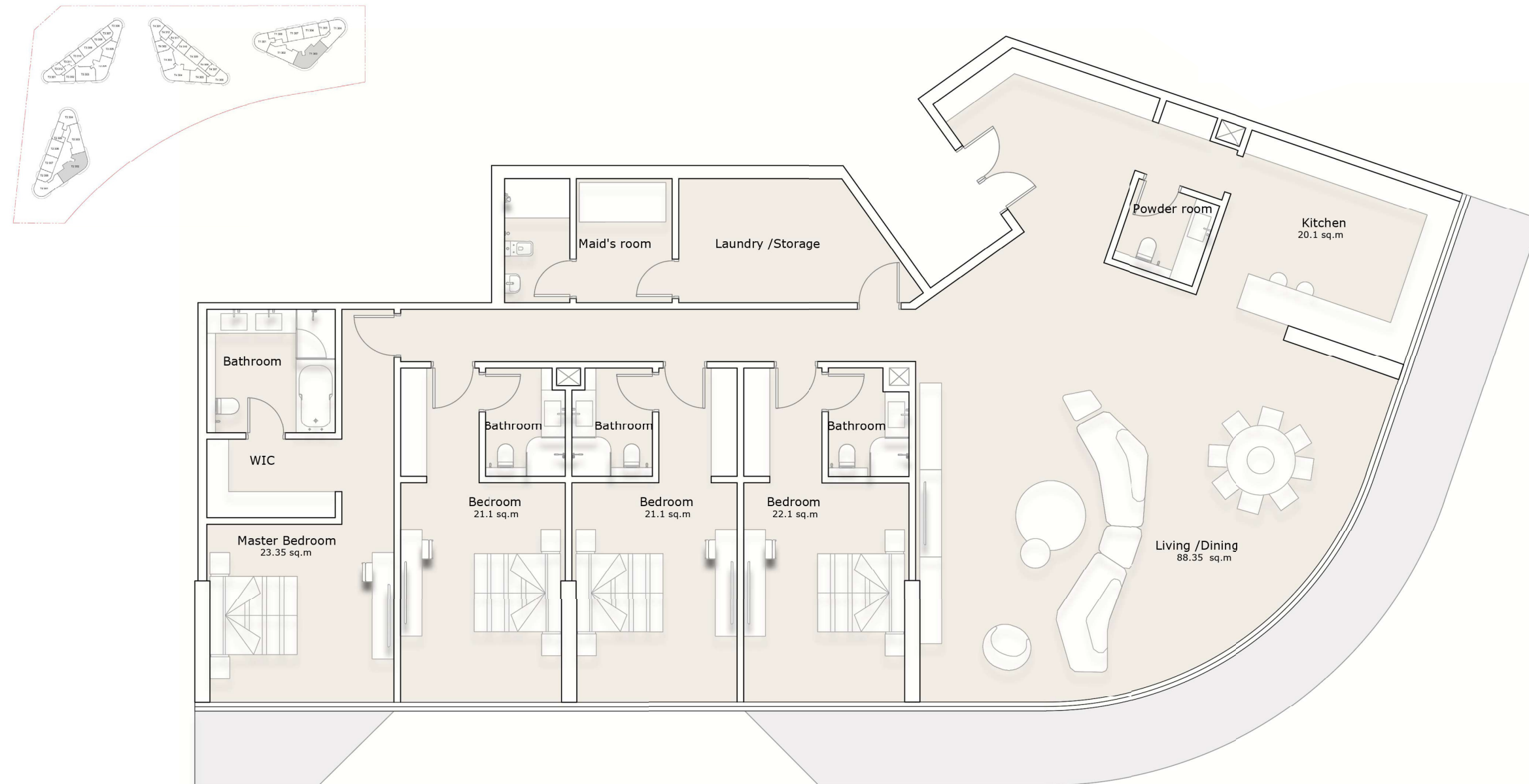




All materials, dimensions, and drawings are approximate only, including actual areas. / Information is subject to change at developer's discretion, without notice, and developer reserves the right to make revisions without liability. / All images used are for illustrative purposes only and do not represent the actual size, features, specifications, fittings, and furnishings.

4-Bedroom Apartment

TOWER 1 & 2 - TYPE A





Real Estate Development

    [nineyardsae](https://www.nineyardsae.com)

8th floor, Office No.803, Silver Wave Tower, Mina Road, Abu Dhabi, United Arab Emirates.
P.O Box 107062, T +971(0) 2 222 2336 www.nineyards.ae